

The machine

Your machine is a Cryolipolysis fat freeze Slimming Machine (NBW-C325)

Before each client you must ensure that the machine is in full working order.

Test each attachment before the client arrives

To test each head-

Ultrasound- apply gel to your arm and place on a low current. If you can hear the ringing and feel no discomfort, then the attachment is working.

Radio-frequency- apply gel to your arm and place onto the skin with a low temperature. Increase temperature until it is warm and that it would be too hot to if help still on the skin

In addition to this make sure electrical equipment is –

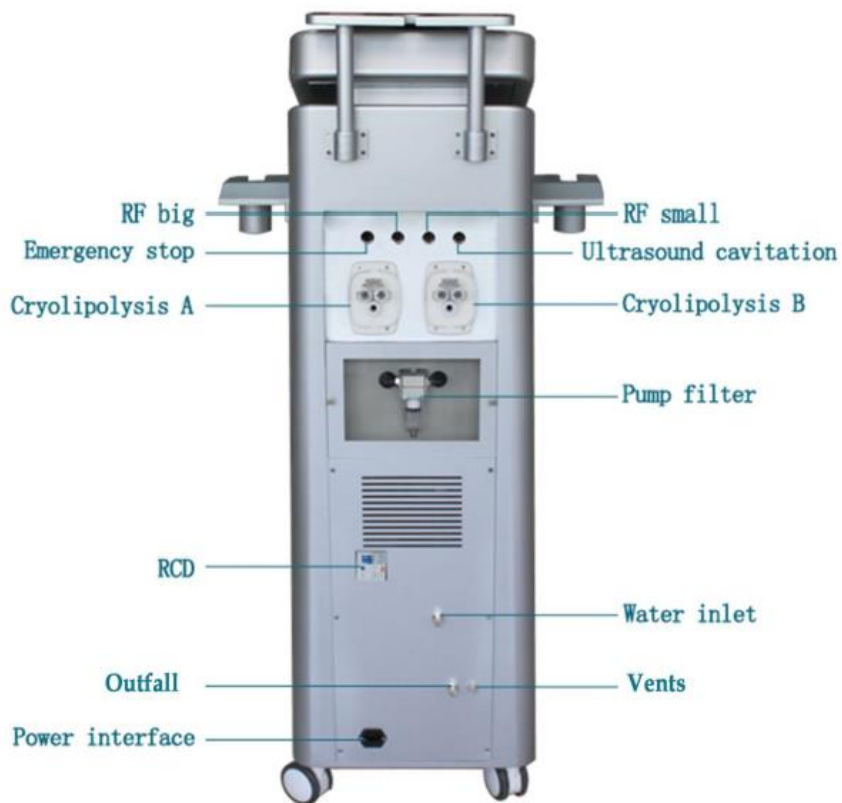
- Kept clean
- Well maintained with check for exposed wires
- PAT test yearly by a qualified person
- Make sure that wires are not trailing and are a hazard.



Front of the machine



Back of the machine



Accessories Detail-



Installation

Before unpacking the machine, you should check whether the accessories are complete with no damage present.

The system should be installed away from heat vents and keep an appropriate distance from other objects.

To ensure that the system is in the best condition, the room temperature should be maintained at about 20 °C, relative humidity and should not exceed 80% .The thermal power of the system is about 200W during work, so it's the best if the treatment rooms are air-conditioned or well ventilated.

Do not allow the instrument to become too hot by prolonged exposure to direct sunlight, or being placed near a heater/radiator.

Installation steps

1. Carefully open the packaging of the machine and place the machine in your chosen location
2. Take out the handle bracket, and install it in the corresponding position below



3. Take the water funnel and insert in the position in the picture



To fill the the machine-

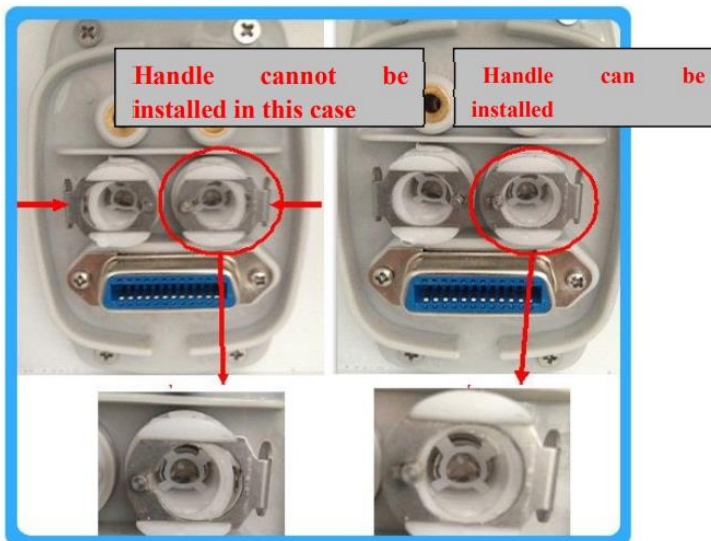


When adding water (approximately 7 litres) making sure that the vents are open and add enough water until water spills out from the vents (make sure you position a bowl under the out flow vents. Fill with distilled or purified water only, tap water or mineral water is not

suitable. Do not stop filling until the water flows out from the over flow port (shown above). Close the vents once the water is coming out of them.

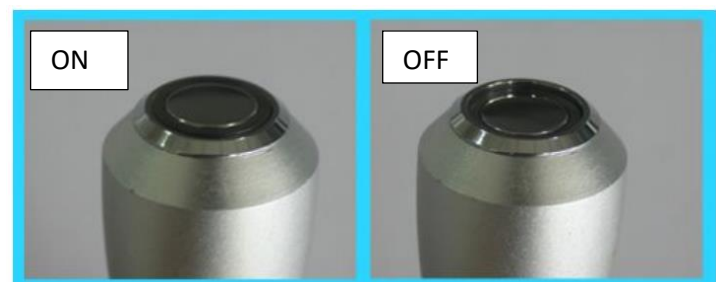
The water inside the machine should be topped up every month. After topping the water up the machine should keep working for 3 minutes to observe if the water is running efficiently.

4. Open the attachments and place them in their designated port



When installing the handle, ensure that the 2 springs beside each connector are pressed down before installing the attachment or the rubber ring will be damaged. Don't pull the handle during operation.

5. Put the filter cotton on the vacuum inlet mouth to protect the liquid being sucked into the attachment.
6. Insert the handhold emergency switch. Confirm that the handhold emergency switch is "ON" before operating the machine.



7. Plug in power cord



8. Insert the key next to the stop button



Cryolipolysis treatment procedure

1. It is best to track your clients progress by taking measurements and photographs before any treatment has taken place. Pictures should always be taken from the same angle each time with the client in the same stance. When measuring the client, for example on the abdomen, you want to take a middle measurement – usually through the middle of the navel and then 5-10cm's above and below this mark.
2. While the client is sitting upright, or standing, use the measuring clamp to give you a reading of fat thickness. This reading is needed for the settings so make sure it is recorded on the client records.
3. The client should be positioned, on the treatment couch, with their back at a slight angle to allow the applicators to have a better grasp of the tissue. Ensure the client modesty is maintained.



4. Ensure the machine is turned on and from the selection available pick the cryolipolysis + Vacuum.



5. To protect the skin during the treatment you must place an anti-freeze gel pad over the area being treated. If this anti-freeze membrane is not used and the skin touches the plates of the vacuum cup, you will cause the skin to suffer damage within 2 minutes! Failure to do this may result in causing the client to experience frostbite and skin necrosis. If you notice that the skin is not fully covered – you should reposition the vacuum head prior to starting the machine. There must be a small edge of this membrane outside of the vacuum cups during treatment.
6. You next need to select the right setting for the client according to their thickness reading. These are pre-set setting to match the clients thickness of fat. Once selected press the play button



7. The next screen should look like this
The timer and temperature are pre-set. The only setting that can be adjusted is the pressure

8. This adjusts the negative pressure therefore controlling how much tissue is sucked into the attachment. A good guide to go for is 60%. If this setting is too high then bruising can occur and the client will have discomfort during the treatment.

9. This setting shows the temperature of the treatment head/attachment and the temperature that has been set

10. When you have set the correct parameters press the button to start the treatment

11. Now the machine is working. The chosen treatment head starts to turn hot and will have suction. The treatment head starts to get cold, to reach the setting temperature after 3 minutes. The four LED lights will appear different colours according to the changing temperature.

12. Once the cycle has finished press the start/stop button to stop the machine. Let the skin slowly sink down and remove the head by breaking the suction using your finger at the side of the cup.

13. Remove the membrane and clean and dry the skin. Treatment benefits can also be maximised by completing a 5-minute massage. After treatment it is normal for the treatment area to feel very cold and for it to be red and possibly purple in areas. This will usually settle within the hour.

14. This tab will take your machine setting back



This display shows which attachment these are settings for, Attachment A or B

To protect the machine, cling film can be placed over the attachment to keep it clean.

It may be beneficial to place a rolled-up towel or pillow under the hand piece to keep it in place and comfortable for the client.

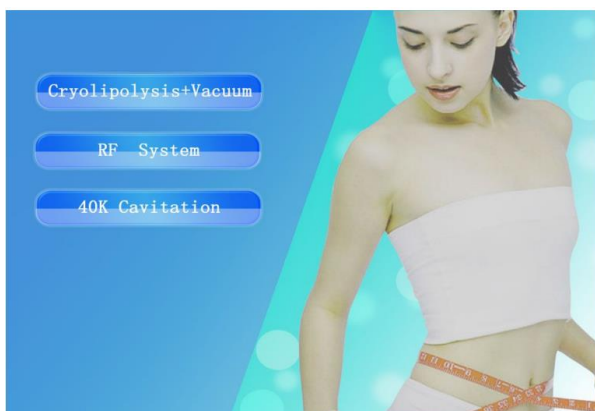
Important points to remember:

- You can only treat 2 areas per session providing they are on opposite sides of the body e.g. hips or arms
- Never overlap treatment areas.
- If a client wants multiple areas treated, you must leave a 4-week gap between them. This is due to the breakdown and detoxification of the tissue and the pressure that the body can go through to achieve this.
- For stubborn areas of fat more than one session may be required. You must allow a minimum of a 2-month gap before treating the same area again, however as a treatment is a 12-week cycle it is ideal to wait the full 12 weeks before re-treating.

- Cryolipolysis is primarily designed for people with localised hypertrophic fat deposits on health people. It was not designed for extremely obese people however research has found it will help to reduce waistlines on overweight people therefore reducing their risk of health complications and can work well in conjunction with clients who are making the necessary changes towards a healthier lifestyle.

Radiofrequency Treatment Procedure

1. From the start menu select RF system



2. The screen should look like this

- Select the attachment (body or face)
- Mode- CW = continuously working PUSH= intermittently on/off
- Intensity 1-50J
- Start/stop
- This is your timer
- This will take you back to the main menu

3. Apply a thick layer of ultrasound gel to the area to be treated
4. Make sure you have tested the machine before putting onto the client's skin. The attachment should feel warm/ hot when on the skin but not too hot so it burns. You MUST keep the attachment moving and make sure there is enough gel on the area being treated at all times. This needs to be worked on the area for 15-20 minutes to be effective.

5. Once completed press stop and clean the gel off of the clients skin.
6. Ensure the attachment is cleaned after use.

REMEMBER there must be 2 weeks between radio frequency treatments

Cavitation Treatment Procedure

1. From the start screen select 40K cavitation



2. From this menu you will need to select the settings required.



- Select the intensity between 1-70J
The client, and you, will hear a ringing sound
- This will be set to how long to use the attachment for.

3. Apply a thick layer of ultrasound gel to the area to be treated. Turn the machine on and keep it moving over the area being treated for 20-30 minutes.
4. Once timing is completed, turn the current off and clean the gel off the skin.

Trouble shooting

Faults	Check parts
No power	Check the power 220V inlet wire to see whether the fuse wire is broken or not
No touch	Re-calibrate the screen
Cooling temperature is lo	Check power supply voltage Check water circulation
Energy output become weaken	Check the set parameters Change treatment handles
Leaking water between machine's joints	Check rubber ring

Replace the fuse wire:

Turn off all power switch, unplug the power cord; open the fuse holder with a small flat head screwdriver, and then take the fuse wire in the fuse holder. Take out the spare (15A / 250V) fuse wire in the accessories sent to you along with the machine.



1

2

3

WARNING Message

ERROR 1: water flow abnormal alarm

ERROR 2: Handle connection break

ERROR 3: Temperature high

Technical parameters

Input Power	1800W
Frozen head pressure	0-100kpa
RF energy	1-50J/cm ²
Cavitation energy	1-70J/cm ²
Frozen head operation screen size	3.5 Inch
RF frequency	2M
Cavitation Frequency	40K
Treatment handle's quantity	5units(Optional)
Touch screen size	10.4 Inch
Frozen head temperature	-15-5°C
Cooling System	Semiconductor Cooling + water-cooling + air cooling
Dimension	435*400*1200mm
Net weight	35kg
Fuse specification	Ø5×25 10A
Power	AC220V±10%, 10A, 50Hz / AC110V±10%10A, 60Hz